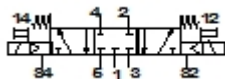


MYH-5/3G-2,3-LED-N

Solenoid valve

Feature	Data/description
Nominal size	2,3 mm
Type of actuation	electrical
Sealing principle	soft
Manual override	resetting
Design structure	Piston slide
Type of reset	mechanical spring
Type of piloting	Piloted
Flow direction	non reversible
Valve function	5/3 monostable closed
Standard nominal flow rate	130 l/min
Operating pressure	2 - 7 bar
Switching time off	45 ms
Switching time on	20 ms
Operating medium	Filtered, unlubricated compressed air, 5 µm filtration Filtered, lubricated compressed air, 5 µm filtration
Medium temperature	5 - 50 °C
Pilot medium	Filtered, unlubricated compressed air, 5 µm filtration Filtered, lubricated compressed air, 5 µm filtration
Ambient temperature	5 - 50 °C
Mounting type	with through hole
Pneumatic connection, port 1	Sub-base
Pneumatic connection, port 2	Sub-base
Pneumatic connection, port 3	Sub-base



MYH-5/3G-2,3-LED-N

Solenoid valve

Feature	Data/description
Pneumatic connection, port 4	Sub-base
Pneumatic connection, port 5	Sub-base