

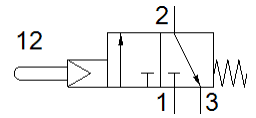
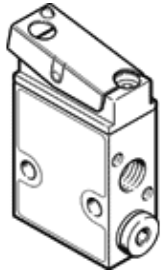
# stem actuated valve

## VS-3-1/8

Part number: 2334

FESTO

Piloted, normally closed.



## Data sheet

| Feature                                 | Value   |
|---|---|
| Valve function                          | 3/2 closed, monostable  |
| Type of actuation                       | mechanical  |
| Standard nominal flow rate              | 146 ... 154 l/min   |
| Operating pressure MPa                  | 0.35 ... 0.8 MPa  |
| Operating pressure                      | 3.5 ... 8 bar   |
| Design structure                        | Poppet seat   |
| Type of reset                           | mechanical spring   |
| Nominal size                            | 3.5 mm  |
| Exhaust-air function                    | throttleable  |
| Sealing principle                       | soft  |
| Assembly position                       | Any   |
| Type of piloting                        | Piloted   |
| Pilot air supply                        | Internal  |
| Flow direction                          | non reversible  |
| Pilot medium                            | Compressed air in accordance with ISO8573-1:2010 [-::-]                     |
| Note on forced dynamisation             | Switching frequency min. 1/year   |
| Operating medium                        | Compressed air in accordance with ISO8573-1:2010 [-::-]                     |
| Note on operating and pilot medium      | Lubricated operation possible (subsequently required for further operation) |
| Corrosion resistance classification CRC | 2 - Moderate corrosion stress   |
| PWIS conformity                         | VDMA24364-B1/B2-L   |
| Medium temperature                      | -10 ... 60 °C   |
| Ambient temperature                     | -10 ... 60 °C   |
| Actuating force                         | 3 N   |
| Product weight                          | 110 g   |
| Mounting type                           | with through hole   |
| Pneumatic connection, port 1            | G1/8  |
| Pneumatic connection, port 2            | G1/8  |
| Pneumatic connection, port 3            | G1/8  |
| Materials note                          | Conforms to RoHS  |
| Material seals                          | NBR   |
| Material housing                        | Aluminium<br>Anodised   |