

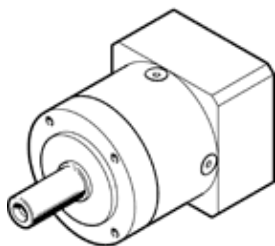
gear unit EMGA-60-P-G5-EAS-60

Part number: 2297687

★ Core product range

Suitable for servo motors.

FESTO



Data sheet

| Feature | Value |
|-------------------------------------|-------------------------|
| Gear unit flange size | 60 mm |
| Motor flange size | 60 mm |
| Torsional backlash | 0.17 deg |
| Type of gear unit | Planetary gear unit |
| Gear unit ratio | 5:1 |
| Max. input speed | 13,000 1/min |
| Operating temperature of gear unit | -25 ... 90 °C |
| PWIS conformity | VDMA24364-B2-L |
| Protection class | IP54 |
| Continuous output torque | 40 Nm |
| Mass moment of inertia of gear unit | 0.078 kgcm ² |
| Max. output torque | 64 Nm |
| Max. efficiency | 98 % |
| Torsional resistance | 2.3 Nm/arcmin |
| Product weight | 900 g |
| Gear unit interface, output shaft | 60H |
| Gear unit interface, drive shaft | 60P |
| Materials note | Conforms to RoHS |