

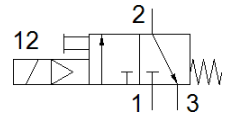
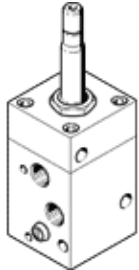
solenoid valve

MCH-3-1/4

Part number: 2200
Product to be discontinued

FESTO

Type to be discontinued. Available until 2022. See Support Portal for alternative products.



Data sheet

Feature	Value
Valve function	3/2 closed, monostable
Type of actuation	electrical
Operating pressure	1 ... 10 bar
Design structure	Poppet seat
Type of reset	mechanical spring
Sealing principle	soft
Type of piloting	Piloted
Flow direction	non reversible
Pneumatic connection, port 1	G1/4
Pneumatic connection, port 2	G1/4
Pneumatic connection, port 3	G1/4
Materials note	Conforms to RoHS