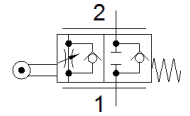
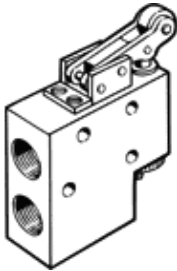


# one-way flow control valve GRR-1/2

Part number: 2111

FESTO

With roller lever and adjustable output flow rate



## Data sheet

Feature	Value
Valve function	One-way flow control function
Pneumatic connection, port 1	G1/2
Pneumatic connection, port 2	G1/2
Adjusting element	Roller lever
Mounting type	with through hole
Standard nominal flow rate in flow control direction	1,300 l/min
Standard nominal flow rate in non-return direction	1250 l/min
Operating pressure	0.3 ... 10 bar
Ambient temperature	-10 ... 60 °C
Material housing	Wrought Aluminium alloy
Assembly position	Any
Operating medium	Compressed air in accordance with ISO8573-1:2010 [7:-:-]
Note on operating and pilot medium	Lubricated operation possible (subsequently required for further operation)
PWIS conformity	VDMA24364-B2-L
Medium temperature	-10 ... 60 °C
Product weight	735 g