

Solenoid valve

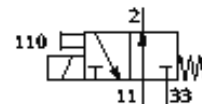
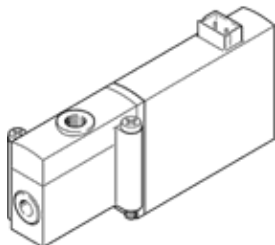
MHP2-M4H-3/20-M5-TC

Part number: 197414

FESTO

Semi in-line valve for individual and manifold mounting, fast switching,
with plug connector on top

Discontinued, available through 2007



Data sheet

Feature	Value
Valve function	3/2 open, single solenoid
Type of actuation	electrical
Width	10 mm
Standard nominal flow rate	100 l/min
Pneumatic working line	M5
Operating voltage	5V DC
Operating pressure	-0.9 ... 8 bar
Design structure	Pressure-relieved poppet valve
Type of reset	mechanical spring
Protection class	IP40
Authorisation	c UL us - Recognized (OL)
Nominal size	2 mm
Grid dimension	14 mm
Exhaust-air function	throttleable
Sealing principle	soft
Assembly position	Any
Manual override	Pushing
Type of piloting	direct
Flow direction	reversible with restrictions
Maximum switching frequency	130 Hz
Switching time off	7 ms
Switching time on	7 ms
Duty cycle	100%
Characteristic coil data	5V DC: 2,88W
Permissible voltage fluctuation	+/- 10 %
Operating medium	Filtered, unlubricated compressed air, 40 µm filtration Filtered, lubricated compressed air, 40 µm filtration
Corrosion resistance classification CRC	2
Medium temperature	-5 ... 40 °C
Ambient temperature	-5 ... 40 °C
Product weight	50 g
Mounting type	On sub-base
Pneumatic connection, 11	Sub-base
Pneumatic connection, port 2	M5
Pneumatic connection, 33	Sub-base
Materials note	Free of copper and PTFE
Materials information for seals	HNBR NBR
Materials information, housing	Zinc die-casting coated
Screw material data	Steel Galvanised