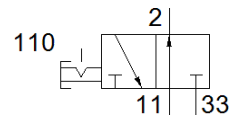
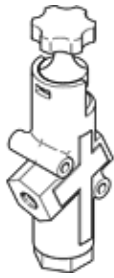


shut-off valve HE-N3/4-LO

Part number: 197131

FESTO



Data sheet

| Feature | Value |
|---|--|
| Sealing principle | soft |
| Exhaust-air function | not throttleable |
| Type of piloting | direct |
| Operating pressure | 1 ... 10 bar |
| C value | 36.28 l/sbar |
| b value | 0.21 |
| Standard nominal flow rate | 8,000 l/min |
| Operating medium | Compressed air in accordance with ISO8573-1:2010 [7:4:4] |
| Corrosion resistance classification CRC | 3 - High corrosion stress |
| PWIS conformity | VDMA24364-B1/B2-L |
| Medium temperature | -10 ... 60 °C |
| Ambient temperature | -10 ... 60 °C |
| Mounting type | Threaded |
| Assembly position | Any |
| Flow direction | non reversible |
| Product weight | 1,000 g |
| Pneumatic connection, port 1 | 3/4 NPT |
| Pneumatic connection, port 2 | 3/4 NPT |
| Pneumatic connection, port 3 | 1 NPT |
| Material seals | NBR TPE-U(PU) |
| Material housing | Aluminium die cast |