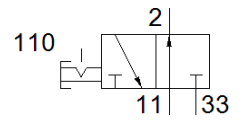
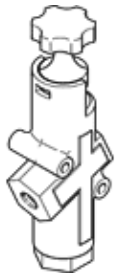


shut-off valve HE-N1/2-LO

Part number: 197130

FESTO



Data sheet

Feature	Value
Sealing principle	soft
Exhaust-air function	not throttleable
Type of piloting	direct
Operating pressure	1 ... 10 bar
C value	28.13 l/sbar
b value	0.28
Standard nominal flow rate	6,200 l/min
Operating medium	Compressed air in accordance with ISO8573-1:2010 [7:4:4]
Corrosion resistance classification CRC	3 - High corrosion stress
PWIS conformity	VDMA24364-B1/B2-L
Medium temperature	-10 ... 60 °C
Ambient temperature	-10 ... 60 °C
Mounting type	Threaded
Assembly position	Any
Flow direction	non reversible
Product weight	1,100 g
Pneumatic connection, port 1	1/2 NPT
Pneumatic connection, port 2	1/2 NPT
Pneumatic connection, port 3	1 NPT
Material seals	NBR TPE-U(PU)
Material housing	Aluminium die cast