

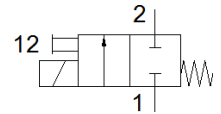
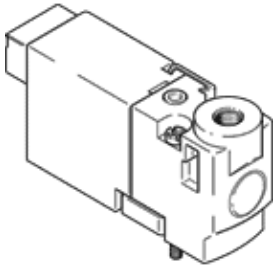
solenoid valve

MHP1-M4H-2/2G-M3-HC

Part number: 197045

FESTO

Semi in-line valve for individual and manifold mounting, very compact, with plug connector at rear



Data sheet

| Feature | Value |
|---|--|
| Valve function | 2/2 closed, monostable |
| Type of actuation | electrical |
| Width | 10 mm |
| Standard nominal flow rate | 14 l/min |
| Operating pressure MPa | -0.09 ... 0.2 MPa |
| Operating pressure | -0.9 ... 2 bar -13.05 ... 29 psi |
| Design structure | Poppet valve with spring return |
| Type of reset | mechanical spring |
| Protection class | IP40 |
| Authorisation | c UL us - Recognized (OL) |
| Certificate issuing department | UL MH19482 |
| Nominal size | 0.9 mm |
| Grid dimension | 10 mm |
| Exhaust-air function | not throttleable |
| Sealing principle | soft |
| Assembly position | Any |
| Manual override | Pushing |
| Type of piloting | direct |
| Flow direction | non reversible |
| Valve position identification | Label |
| Overlap | Underlap |
| Note on forced dynamisation | Switching frequency at least once a week |
| Suitability for vacuum | Yes |
| Maximum switching frequency | 20 Hz |
| Switching time off | 5 ms |
| Switching time on | 4 ms |
| Duty cycle | 100 % |
| Electrical power consumption | 1 W |
| Characteristic coil data | 5 V DC: 1 W |
| Permissible voltage fluctuation | +/- 10 % |
| Operating medium | Compressed air in accordance with ISO8573-1:2010 [7:4:4] |
| Note on operating and pilot medium | Lubricated operation possible (subsequently required for further operation) |
| Vibration resistance | Transport application test at severity level 2 in accordance with FN 942017-4 and EN 60068-2-6 |
| Shock resistance | Shock test with severity level 2 in accordance with FN 942017-5 and EN 60068-2-27 |
| Corrosion resistance classification CRC | 2 - Moderate corrosion stress |
| PWIS conformity | VDMA24364-B2-L |
| Storage temperature | -20 ... 60 °C |
| Medium temperature | -5 ... 40 °C |
| Ambient temperature | -5 ... 40 °C |

| Feature | Value |
|------------------------------|----------------------------------|
| Product weight | 10 g |
| Electrical connection | Plug |
| Mounting type | On sub-base with through hole |
| Pneumatic connection, port 1 | Sub-base |
| Pneumatic connection, port 2 | M3 |
| Materials note | Conforms to RoHS |
| Material seals | FPM HNBR NBR |
| Material housing | PA-reinforced PPS-reinforced |