

# solenoid valve

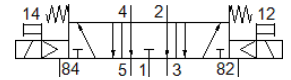
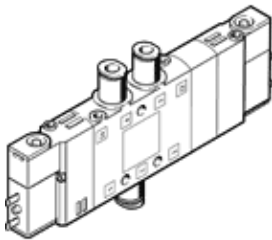
## CPE14-M1BH-5/3E-QS-8

Part number: 196900  
Classic - do not use for new projects

FESTO

High component density

Modern alternatives can be found by entering the first four characters of the type code in the search field.



## Data sheet

| Feature                                 | Value  |
|---|--|
| Valve function                          | 5/3 exhausted  |
| Type of actuation                       | electrical   |
| Width                                   | 14 mm  |
| Standard nominal flow rate              | 570 l/min  |
| Operating pressure MPa                  | 0.3 ... 0.8 MPa  |
| Operating pressure                      | 3 ... 8 bar  |
| Design structure                        | Piston slide   |
| Type of reset                           | mechanical spring  |
| Authorisation                           | c UL us - Recognized (OL)  |
| Maritime classification                 | see certificate  |
| Protection class                        | IP65<br>with plug socket<br>to IEC 60529   |
| Nominal size                            | 6 mm   |
| Exhaust-air function                    | throttleable   |
| Sealing principle                       | soft   |
| Assembly position                       | Any  |
| Manual override                         | with accessories, detenting<br>Pushing   |
| Type of piloting                        | Piloted  |
| Pilot air supply                        | Internal   |
| Flow direction                          | non reversible   |
| Valve position identification           | Inscription label holder   |
| Overlap                                 | Positive overlap   |
| Switching time off                      | 42 ms  |
| Switching time on                       | 20 ms  |
| Duty cycle                              | 100% with holding current reduction  |
| Max. positive test pulse with logic 0   | 1,200 µs   |
| Max. negative test pulse with logic 1   | 900 µs   |
| Characteristic coil data                | 24 V DC: 1.28 W  |
| Permissible voltage fluctuation         | -15 % / +10 %  |
| Operating medium                        | Compressed air in accordance with ISO8573-1:2010 [7:4:4]                                       |
| Note on operating and pilot medium      | Lubricated operation possible (subsequently required for further operation)                    |
| Vibration resistance                    | Transport application test at severity level 2 in accordance with FN 942017-4 and EN 60068-2-6 |
| Shock resistance                        | Shock test with severity level 2 in accordance with FN 942017-5 and EN 60068-2-27              |
| Corrosion resistance classification CRC | 2 - Moderate corrosion stress  |
| PWIS conformity                         | VDMA24364-B1/B2-L  |
| Medium temperature                      | -5 ... 50 °C   |
| Ambient temperature                     | -5 ... 50 °C   |

| Feature                      | Value              |
|------------------------------|--------------------|
| Electrical connection        | 2-pin              |
| Mounting type                | with through hole  |
| Pilot exhaust port 82        | M3                 |
| Pilot exhaust port 84        | M3                 |
| Pilot air port 12            | M3                 |
| Pilot air port 14            | M3                 |
| Pneumatic connection, port 1 | QS-8               |
| Pneumatic connection, port 2 | QS-8               |
| Pneumatic connection, port 3 | G1/8               |
| Pneumatic connection, port 4 | QS-8               |
| Pneumatic connection, port 5 | G1/8               |
| Materials note               | Conforms to RoHS   |
| Material seals               | NBR                |
| Material housing             | Aluminium die cast |