

solenoid valve

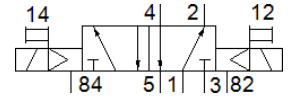
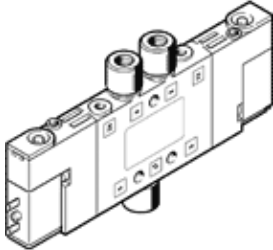
CPE10-M1BH-5J-M5

Part number: 196875
Classic - do not use for new projects

FESTO

High component density

Modern alternatives can be found by entering the first four characters of the type code in the search field.



Data sheet

| Feature | Value |
|---|--|
| Valve function | 5/2 bistable |
| Type of actuation | electrical |
| Width | 10 mm |
| Standard nominal flow rate | 180 l/min |
| Operating pressure MPa | 0.25 ... 0.8 MPa |
| Operating pressure | 2.5 ... 8 bar |
| Design structure | Piston slide |
| Authorisation | c UL us - Recognized (OL) |
| Maritime classification | see certificate |
| Protection class | IP65 with plug socket to IEC 60529 |
| Nominal size | 4 mm |
| Exhaust-air function | throttleable |
| Sealing principle | soft |
| Assembly position | Any |
| Manual override | with accessories, detenting Pushing |
| Type of piloting | Piloted |
| Pilot air supply | Internal |
| Flow direction | non reversible |
| Valve position identification | Inscription label holder |
| Overlap | Positive overlap |
| Switching time reversal | 8 ms |
| Duty cycle | 100% with holding current reduction |
| Max. positive test pulse with logic 0 | 1,200 µs |
| Max. negative test pulse with logic 1 | 900 µs |
| Characteristic coil data | 24 V DC: 1.28 W |
| Permissible voltage fluctuation | -15 % / +10 % |
| Operating medium | Compressed air in accordance with ISO8573-1:2010 [7:4:4] |
| Note on operating and pilot medium | Lubricated operation possible (subsequently required for further operation) |
| Vibration resistance | Transport application test at severity level 2 in accordance with FN 942017-4 and EN 60068-2-6 |
| Shock resistance | Shock test with severity level 2 in accordance with FN 942017-5 and EN 60068-2-27 |
| Corrosion resistance classification CRC | 2 - Moderate corrosion stress |
| PWIS conformity | VDMA24364-B1/B2-L |
| Medium temperature | -5 ... 50 °C |
| Ambient temperature | -5 ... 50 °C |
| Electrical connection | 2-pin |
| Mounting type | with through hole |

| Feature | Value |
|------------------------------|--------------------|
| Pilot exhaust port 82 | M3 |
| Pilot exhaust port 84 | M3 |
| Pilot air port 12 | M3 |
| Pilot air port 14 | M3 |
| Pneumatic connection, port 1 | M5 |
| Pneumatic connection, port 2 | M5 |
| Pneumatic connection, port 3 | M7 |
| Pneumatic connection, port 4 | M5 |
| Pneumatic connection, port 5 | M7 |
| Materials note | Conforms to RoHS |
| Material seals | NBR |
| Material housing | Aluminium die cast |