

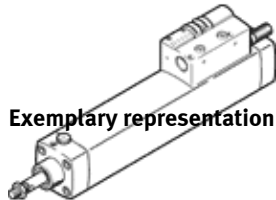
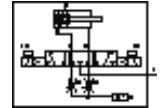
Cylinder/valve combination DNCV-50- -PPV-A-5/3ED

Part number: 196830

FESTO

With diagnosis module

Products to be discontinued. Available until 2010.



Exemplary representation

Data sheet

Feature	Value
Stroke	85 ... 500 mm
Piston diameter	50 mm
Based on the standard	ISO 15552 (previously also VDMA 24652, ISO 6431, NF E49 003.1, UNI 10290)
Cushioning	PPV: Pneumatic cushioning adjustable at both ends
Assembly position	Any
Manual override	detenting Pushing
Position detection	For proximity sensor
Switching element function	Normally open contact
Operating pressure	3 ... 8 bar
Operating voltage range DC	24 V
Mode of operation	double-acting
Max. output current, diagnosis	300 mA
Max. output current, sensors	20 mA
Max. switching output voltage DC	26.9 V
Characteristic coil data	24 V DC: low current phase: 0.5 W, high current phase: 1.23 W
Operating medium	Filtered compressed air, 5 µm filtration Filtered, unlubricated compressed air, 40 µm filtration
CE mark (see declaration of conformity)	to EU directive for EMC
Corrosion resistance classification CRC	2
Protection class	IP65 to IEC 60529
Ambient temperature	-5 ... 50 °C
Authorisation	C-Tick
Cushioning length	22 mm
Theoretical force at 6 bar, return stroke	990 N
Theoretical force at 6 bar, advance stroke	1,178 N
Moving mass with 0 mm stroke	538 g
Additional weight per 10 mm stroke	79 g
Basic weight for 0 mm stroke	1,960 g
Additional mass factor per 10 mm of stroke	25 g
Electrical connection	8-pin M12x1 Plug Round design
Pneumatic connection, port 1	QS-10
Pneumatic connection, port 3	Integrated silencer
Pneumatic connection, port 5	Integrated silencer