

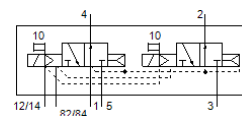
# solenoid valve

## CDVI5.0-MT2H-2X3OLS

Part number: 196663

FESTO

For valve terminal CDVI, Clean Design.



## Data sheet

Feature	Value
Valve function	2x3/2 open, monostable
Type of actuation	electrical
Standard nominal flow rate	300 l/min
Operating pressure	3 ... 10 bar
Design structure	Piston slide
Type of reset	Air spring
Nominal size	5 mm
Sealing principle	soft
Manual override	Pushing
Type of piloting	Piloted
Pilot air supply	external
Flow direction	non reversible
Note on forced dynamisation	Switching frequency min. 1/month
Pilot pressure	3 ... 8 bar
b value	0.14
C value	1.4 l/sbar
Switching time off	22 ms
Switching time on	10 ms
Operating medium	Compressed air in accordance with ISO8573-1:2010 [7:4:4]
Note on operating and pilot medium	Lubricated operation possible (subsequently required for further operation)
Corrosion resistance classification CRC	3 - High corrosion stress
PWIS conformity	VDMA24364-B2-L
Medium temperature	-5 ... 50 °C
Ambient temperature	-5 ... 50 °C
Product weight	210 g
Mounting type	Threaded
Pilot exhaust port 82/84	Sub-base
Pneumatic connection, port 1	Sub-base
Pneumatic connection, port 2	Sub-base
Pneumatic connection, port 3	Sub-base
Pneumatic connection, port 4	Sub-base
Pneumatic connection, port 5	Sub-base
Materials note	Conforms to RoHS
Material seals	NBR TPE-O
Material housing	Aluminium die cast