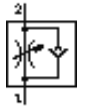


One-way flow control valve GRXA-1/4-QS-10-D

Part number: 195815

FESTO

For restricting exhaust air flow, with QS push-in connector



Data sheet

Feature	Value
Valve function	One-way flow control function for exhaust air
Pneumatic connection, port 1	QS-10
Pneumatic connection, port 2	G1/4
Adjusting element	Slotted head screw
Mounting type	Threaded
Standard nominal flow rate in flow control direction	480 l/min
Standard nominal flow rate in non-return direction	345 ... 500 l/min
Operating pressure	0.2 ... 10 bar
Ambient temperature	-10 ... 60 °C
Operating medium	Filtered, unlubricated compressed air, 40 µm filtration Filtered, lubricated compressed air, 40 µm filtration
Assembly position	Any
Standard flow rate in direction of flow control: 6 -> 0 bar	760 l/min
Standard flow rate in blocked direction: 6 -> 0 bar	630 ... 790 l/min
Medium temperature	-10 ... 60 °C
Max. tightening torque	11 Nm
Product weight	47 g
Materials information for screw-in stud	Wrought Aluminium alloy
Materials information for seals	NBR
Release ring material data	POM
Regulating screw material data	Brass
Swivel joint material data	Zinc die-casting Chromed