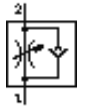


# One-way flow control valve GRXA-M5-QS-6-D

Part number: 195808

FESTO

For restricting exhaust air flow, with QS push-in connector



## Data sheet

| Feature   | Value  |
|---|--|
| Valve function  | One-way flow control function for exhaust air  |
| Pneumatic connection, port 1                                | QS-6   |
| Pneumatic connection, port 2                                | M5   |
| Adjusting element   | Slotted head screw   |
| Mounting type   | Threaded   |
| Standard nominal flow rate in flow control direction        | 115 l/min  |
| Standard nominal flow rate in non-return direction          | 70 ... 110 l/min   |
| Operating pressure  | 0.2 ... 10 bar   |
| Ambient temperature   | -10 ... 60 °C  |
| Operating medium  | Filtered, unlubricated compressed air, 40 µm filtration<br>Filtered, lubricated compressed air, 40 µm filtration |
| Assembly position   | Any  |
| Standard flow rate in direction of flow control: 6 -> 0 bar | 185 l/min  |
| Standard flow rate in blocked direction: 6 -> 0 bar         | 145 ... 170 l/min  |
| Medium temperature  | -10 ... 60 °C  |
| Max. tightening torque                                      | 1.5 Nm   |
| Product weight  | 16 g   |
| Materials information for screw-in stud                     | Wrought Aluminium alloy  |
| Materials information for seals                             | NBR  |
| Release ring material data                                  | POM  |
| Regulating screw material data                              | Brass  |
| Swivel joint material data                                  | Zinc die-casting<br>Chromed  |