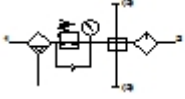


FRCS-1/2-D-DI-MAXI-KA-A

Service unit combination

Feature	Data/description
Size	Maxi
Series	D
Actuator lock	Rotary knob with integrated lock
Assembly position	Vertical +/- 5°
Grade of filtration	40 µm
Condensate drain	fully automatic
Design structure	Branching module Filter regulator with pressure gauge Proportional standard oil-mist lubricator
Max. condensate volume	43 cm ³
Bowl guard	Metal bowl guard
Pressure gauge	with pressure gauge
Output pressure 3	0,5 - 12 bar
Output pressure 4	0,5 - 12 bar
Pressure control range	0,5 - 12 bar
Inlet pressure 1	1,5 - 12 bar
Standard nominal flow rate	5.200 l/min
Operating medium	Compressed air
Medium temperature	-10 - 60 °C
Ambient temperature	-10 - 60 °C
Product weight	3.940 g
Mounting type	Optional Line installation with accessories
Pneumatic connection, port 1	G1/2



Data sheet

Part no.: **195205**

Page:2

FRCS-1/2-D-DI-MAXI-KA-A

Service unit combination

Feature	Data/description
Pneumatic connection, port 2	G1/2
Pneumatic connection, port 3	G3/4
Pneumatic connection, port 4	G1/4
Materials note	Contains PWIS substances
Materials information, housing	Zinc die-casting
Materials information for bowl	PC