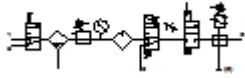


## FRCS-1/2-D-MAXI-KF-A

### Service unit combination

Feature	Data/description
Size	Maxi
Series	D
Actuator lock	Rotary knob with integrated lock
Assembly position	Vertical +/- 5°
Grade of filtration	40 µm
Condensate drain	fully automatic
Design structure	Branching module Pressure sensor On/off valve Filter regulator with pressure gauge Proportional standard oil-mist lubricator Safety start-up valve
Max. condensate volume	80 cm <sup>3</sup>
Bowl guard	Metal bowl guard
Pressure gauge	with pressure gauge
Output pressure 3	2,5 - 12 bar
Pressure control range	2,5 - 12 bar
Inlet pressure 1	3,5 - 12 bar
Max. pressure hysteresis	0,25 bar
Standard nominal flow rate	3.400 l/min
Operating medium	Compressed air
Medium temperature	-10 - 60 °C
Ambient temperature	-10 - 60 °C
Product weight	6.400 g
Mounting type	Optional Line installation with accessories



## FRCS-1/2-D-MAXI-KF-A

### Service unit combination

Feature	Data/description
Pneumatic connection, port 1	G1/2
Pneumatic connection, port 2	G1/2
Pneumatic connection, port 3	G3/4
Materials note	Contains PWIS substances
Materials information, housing	Zinc die-casting
Materials information for bowl	PC