

# pressure regulator LRS-1-D-7-DI-MAXI

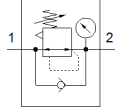
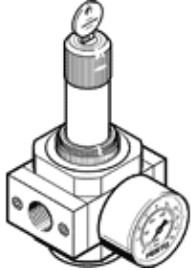
Part number: 194680

Classic - do not use for new projects

Directly actuated regulator, with lockable regulator head.

Modern alternatives can be found by entering the first four characters of the type code in the search field.

FESTO



## Data sheet

Feature	Value
Size	Maxi
Series	D
Actuator lock	Rotary knob with lock
Assembly position	Any
Design structure	directly-controlled diaphragm regulator
Controller function	Output pressure constant with initial pressure compensation with secondary exhaust with return flow
Pressure gauge	with pressure gauge
Operating pressure	1 ... 16 bar
Pressure regulation range	0.5 ... 7 bar
Max. pressure hysteresis	0.4 bar
Standard nominal flow rate	8,400 l/min
Operating medium	Compressed air in accordance with ISO8573-1:2010 [7:4:4] Inert gases
Note on operating and pilot medium	Lubricated operation possible (subsequently required for further operation)
Corrosion resistance classification CRC	2 - Moderate corrosion stress
PWIS conformity	VDMA24364-B1/B2-L
Air purity class at output	Compressed air in accordance with ISO8573-1:2010 [7:4:4] Inert gases
Medium temperature	-10 ... 60 °C
Ambient temperature	-10 ... 60 °C
Product weight	1,680 g
Mounting type	Front panel installation Line installation with accessories
Pneumatic connection, port 1	G1
Pneumatic connection, port 2	G1
Materials note	Conforms to RoHS
Material of connecting plate	Zinc die-casting
Material seals	NBR
Material housing	Zinc die-casting
Material membrane	NBR