

pressure regulator LRS-3/4-D-MAXI

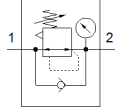
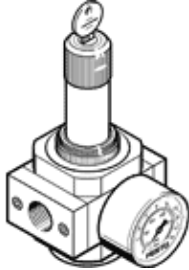
Part number: 194664

Classic - do not use for new projects

With lockable regulator head, working pressure up to 12 bar.

Modern alternatives can be found by entering the first four characters of the type code in the search field.

FESTO



Data sheet

Feature	Value
Size	Maxi
Series	D
Actuator lock	Rotary knob with integrated lock
Assembly position	Any
Design structure	Piloted piston regulator
Controller function	Output pressure constant with secondary exhaust
Pressure gauge	with pressure gauge
Operating pressure	0 ... 16 bar
Pressure regulation range	0.5 ... 12 bar
Max. pressure hysteresis	0.4 bar
Standard nominal flow rate	11,000 l/min
Operating medium	Compressed air in accordance with ISO8573-1:2010 [7:4:4] Inert gases
Note on operating and pilot medium	Lubricated operation possible (subsequently required for further operation)
PWIS conformity	VDMA24364-B1/B2-L
Air purity class at output	Compressed air in accordance with ISO8573-1:2010 [7:4:4] Inert gases
Medium temperature	-10 ... 60 °C
Ambient temperature	-10 ... 60 °C
Product weight	888 g
Mounting type	Front panel installation Line installation with accessories
Pneumatic connection, port 1	G3/4
Pneumatic connection, port 2	G3/4
Materials note	Conforms to RoHS
Material of connecting plate	Zinc die-casting
Material seals	NBR
Material housing	Zinc die-casting