

# One-way flow control valve GRLA-1/16-NPT-QS-1/4-U

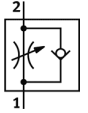
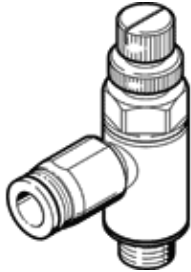
Part number: 192859

FESTO

For exhaust air flow control, with swivel joint.

This product is only available if ordered from the Festo Corporation, USA.

Products to be discontinued. Available until 2011.



## Data sheet

Feature	Value
Valve function	One-way flow control function
Pneumatic connection, port 1	QS-1/4
Pneumatic connection, port 2	NPT1/16-27
Adjusting element	Knurled screw
Standard nominal flow rate in flow control direction	56 l/min
Standard nominal flow rate in non-return direction	35 l/min
Operating pressure	1 ... 9 bar
Ambient temperature	0 ... 60 °C
Materials information, housing	PBT-reinforced
Operating medium	Compressed air, filtered, unlubricated Filtered, lubricated air
Assembly position	Any
Medium temperature	0 ... 60 °C
Product weight	18 g
Materials information for screw-in stud	Brass
Release ring material data	POM