

One-way flow control valve GRLA-1/16-NPT-QS-3/16-U

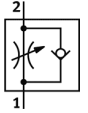
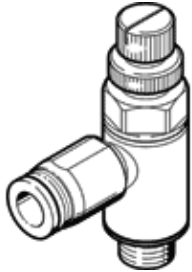
Part number: 192858

FESTO

For exhaust air flow control, with swivel joint.

This product is only available if ordered from the Festo Corporation, USA.

Products to be discontinued. Available until 2011.



Data sheet

| Feature | Value |
|--|--|
| Valve function | One-way flow control function |
| Pneumatic connection, port 1 | QS-3/16 |
| Pneumatic connection, port 2 | NPT1/16-27 |
| Adjusting element | Knurled screw |
| Standard nominal flow rate in flow control direction | 56 l/min |
| Standard nominal flow rate in non-return direction | 34 l/min |
| Operating pressure | 1 ... 9 bar |
| Ambient temperature | 0 ... 60 °C |
| Materials information, housing | PBT-reinforced |
| Operating medium | Compressed air, filtered, unlubricated Filtered, lubricated air |
| Assembly position | Any |
| Medium temperature | 0 ... 60 °C |
| Product weight | 18 g |
| Materials information for screw-in stud | Brass |
| Release ring material data | POM |