

# One-way flow control valve GR-QS-3/8

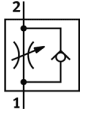
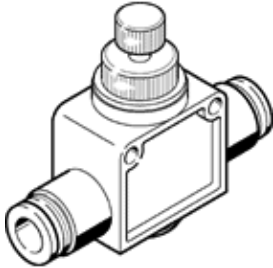
Part number: 192755

FESTO

With flow adjustable in one direction.

This product is only available if ordered from the Festo Corporation, USA.

Products to be discontinued. Available until 2011.



## Data sheet

Feature	Value
Valve function	One-way flow control function
Pneumatic connection, port 1	QS-3/8
Pneumatic connection, port 2	QS-3/8
Adjusting element	Knurled screw
Mounting type	Optional with through hole Line installation
Standard nominal flow rate in flow control direction	438 l/min
Standard nominal flow rate in non-return direction	272 l/min
Operating pressure	1 ... 9 bar
Ambient temperature	0 ... 60 °C
Materials information, housing	PBT-reinforced
Operating medium	Compressed air, filtered, unlubricated Filtered, lubricated air
Assembly position	Any
Medium temperature	0 ... 60 °C
Product weight	68.5 g
Release ring material data	POM
Regulating screw material data	Brass Nickel plated