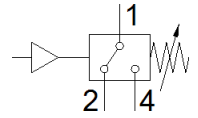
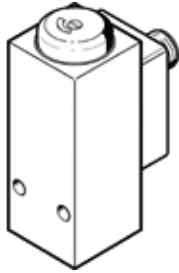


pressure switch PEV-1/4-B-M12

Part number: 192488

FESTO



Data sheet

Feature	Value
Conforms to standard	EN 60947-5-1
Authorisation	CCC c UL us - Recognized (OL)
CE mark (see declaration of conformity)	to EU directive low-voltage devices
UKCA marking (see declaration of conformity)	To UK instructions for electrical equipment
Materials note	Conforms to RoHS
Measured variable	Relative pressure
Measurement method	Pneu./elect. pressure transducer
Operating pressure MPa	0.1 ... 1.2 MPa
Operating pressure	1 ... 12 bar
Operating medium	Compressed air in accordance with ISO8573-1:2010 [7:-:-] Water
Note on operating and pilot medium	Lubricated operation possible (subsequently required for further operation)
Medium temperature	-20 ... 80 °C
Ambient temperature	-20 ... 80 °C
Switching element function	Changeover switch
Max. switching frequency	3 Hz
Max. switching output voltage AC	48 V
Max. switching output voltage DC	48 V
Max. output current	4,000 mA
Minimum load current	1 mA at 24 V 10 mA at 10 V 100 mA at 5V
Utilisation category for inductive load	AC-14 DC-13
Utilisation category for ohmic load	AC-12 DC-12
Electrical connection	4-pin M12x1 Plug to EN 60947-5-2 Round design
Mounting type	with through hole
Assembly position	Any
Pneumatic connection	G1/4
Product weight	194 g
Material housing	Aluminium die cast
Material switch contact	silver
Threshold setting range	1 ... 12 bar
Protection class	IP65
Corrosion resistance classification CRC	2 - Moderate corrosion stress
PWIS conformity	VDMA24364-B1/B2-L