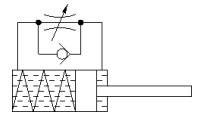
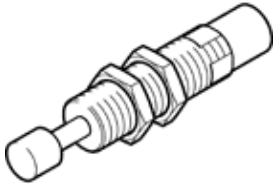


# shock absorber YSRW-12-20

Part number: 191196

FESTO

Self-adjusting, with progressive characteristic curve.



## Data sheet

Feature	Value
Size	12
Stroke	20 mm
Cushioning	self-adjusting Soft characteristic
Assembly position	Any
Position detection	No
Max. impact speed	3 m/s
Reset time short	0.3 s
Reset time long	1 s
Mode of operation	single-acting pushing action
Corrosion resistance classification CRC	2 - Moderate corrosion stress
PWIS conformity	VDMA24364-B2-L
Ambient temperature	-10 ... 80 °C
Cushioning length	20 mm
Max. stop force	1,000 N
Max. energy consumption per stroke	12 J
Max. energy consumption per hour	41,000 J
Max. residual energy	0.05 J
Reset force	5 N
Product weight	78 g
Mounting type	with lock nut
Materials note	Conforms to RoHS
Material seals	NBR
Material housing	steel, galvanized
Material piston rod	High alloy steel