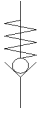
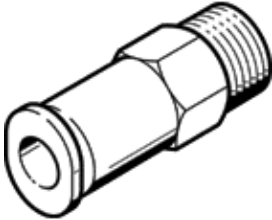


non-return valve HA-1/4-QSM-3/16-U

Part number: 190852

FESTO

Flow rate from the male thread to the QS plug connector.
This type is suitable for vacuum.



Data sheet

Feature	Value
Valve function	Non-return function
Pneumatic connection, port 1	1/4 NPT
Pneumatic connection, port 2	QS-3/16
Mounting type	Threaded
Standard nominal flow rate	238 l/min
Operating pressure	-1 ... 10 bar
Ambient temperature	0 ... 60 °C
Material housing	Brass
Operating medium	Compressed air in accordance with ISO8573-1:2010 [7:::]
Min. differential pressure, opening	0.1 bar
Min. differential pressure, closing	0.2 bar
Note on operating and pilot medium	Lubricated operation possible (subsequently required for further operation)
PWIS conformity	VDMA24364-B2-L
Product weight	24 g
Materials note	Conforms to RoHS