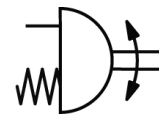
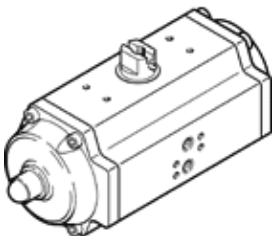


Semi-rotary drive DRE-225-F14-Q12-FS

Part number: 190404

FESTO

Single-acting, air connection as per VDI/VDE 3845, Namur valves can be directly flange-mounted



Data sheet

| Feature | Value |
|--|---|
| Size of actuator | 225 |
| Flange hole pattern | F14 |
| Swivel angle | 90 deg |
| Fitting connection conforms to standard | ISO 5211 |
| Cushioning | No cushioning |
| Assembly position | Any |
| Mode of operation | single-acting |
| Design structure | Rack and pinion |
| Position detection | No |
| Closing direction | Spring force, closing |
| Valve connection conforms to standard | VDI/VDE 3845 (NAMUR) |
| Operating pressure | 2 ... 10 bar |
| ATEX category Gas | II 2G |
| Explosion ignition protection type Gas | c T6 |
| ATEX category Dust | II 2D |
| Explosion ignition protection type Dust | c 60°C |
| Explosion-proof ambient temperature | -20°C ≤ Ta ≤ +60°C |
| Operating medium | Compressed air in accordance with ISO8573-1:2010 [7:4:4] |
| Note on operating and pilot medium | Lubricated operation possible (subsequently required for further operation) |
| CE mark (see declaration of conformity) | to EU directive explosion protection (ATEX) |
| Corrosion resistance classification CRC | 3 |
| Ambient temperature | -20 ... 80 °C |
| Air consumption at 6 bar per cycle 0°-90°-0° | 49.8 l |
| Product weight | 60,400 g |
| Shaft connection | V36 |
| Pneumatic connection | Sub-base G1/4 |
| Materials note | Contains PWIS substances |