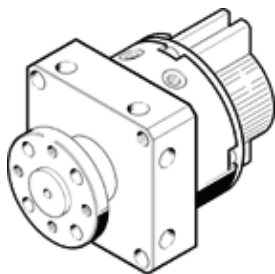


semi-rotary drive DSM-10-90-P-A-FW

Part number: 185943

FESTO

with flanged shaft, fixed stop and position sensing



Data sheet

Feature	Value
Size	10
Cushioning angle	0.5 deg
Swivel angle	0 ... 90 deg
Cushioning	P: Flexible cushioning rings/plates at both ends
Assembly position	Any
Mode of operation	double-acting
Design structure	Rotary vane
Position detection	For proximity sensor
Operating pressure	2.5 ... 8 bar
Max. swivel frequency at 0.6 MPa (6 bar, 87 psi)	3 Hz
Operating medium	Compressed air in accordance with ISO8573-1:2010 [7:4:4]
Note on operating and pilot medium	Lubricated operation possible (subsequently required for further operation)
PWIS conformity	VDMA24364-B1/B2-L
Ambient temperature	0 ... 60 °C
Theoretical torque at 0.6 MPa (6 bar, 87 psi)	0.85 Nm
Permissible mass moment of inertia	0.0026 kgm ²
Product weight	159 g
Mounting type	with internal (female) thread
Pneumatic connection	M3
Materials note	Conforms to RoHS
Material of drive shaft	High alloy steel, non-corrosive
Material seals	TPE-U(PU)
Material housing	Aluminium Anodised