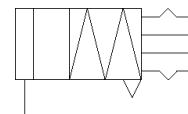
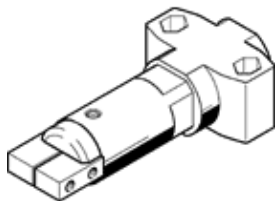


angle gripper HGWM-12-EZ-G6

Part number: 185702

FESTO

Micro, stroke compensation.



Data sheet

Feature	Value
Size	12
Max. angular gripper jaw backlash ax,ay	0.5 deg
Max. gripper jaw backlash Sz	0.03 mm
Max. opening angle	14 deg
Repetition accuracy, gripper	≤ 0.02 mm
Number of gripper fingers	2
Mode of operation	single-acting closed
Gripper function	Angle
Design structure	Inclined plane
Position detection	No
Operating pressure	2 ... 8 bar
Max. operating frequency of gripper	4 Hz
Min. opening time at 0.6 MPa (6 bar, 87 psi)	1.7 ms
Min. closing time at 0.6 MPa (6 bar, 87 psi)	2.8 ms
Operating medium	Compressed air in accordance with ISO8573-1:2010 [7::-]
Corrosion resistance classification CRC	2 - Moderate corrosion stress
PWIS conformity	VDMA24364-B2-L
Ambient temperature	5 ... 60 °C
Spring force of stroke compensator	10 ... 23 N
Spring return moment	1.5 Ncm
Total gripping torque at 0.6 MPa (6 bar, 87 psi) opening	76 Ncm
Max. force on gripper jaw Fz static	20 N
Max. torque at gripper Mx static	40 Ncm
Max. torque at gripper My static	40 Ncm
Max. torque at gripper Mz static	40 Ncm
Product weight	75 g
Mounting type	with internal (female) thread
Pneumatic connection	M3
Material cover cap	POM
Material housing	High alloy steel, non-corrosive
Material gripper jaws	High alloy steel