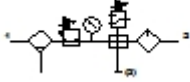




FRC-M3-G1/2-KB00

Service unit combination

Feature	Data/description
Size	3
Series	M
Actuator lock	Rotary knob with lock
Assembly position	Vertical +/- 5°
Grade of filtration	40 µm
Condensate drain	manual rotary
Design structure	Branching module Pressure sensor Filter regulator with pressure gauge Proportional standard oil-mist lubricator
Max. condensate volume	65,5 cm ³
Bowl guard	Plastic guard
Pressure gauge	with pressure gauge
Pressure control range	0 - 10 bar
Inlet pressure 1	0 - 12 bar
Max. pressure hysteresis	0,5 bar
Standard nominal flow rate	3.200 l/min
Operating medium	Compressed air
Medium temperature	-10 - 60 °C
Ambient temperature	-10 - 60 °C
Product weight	3.300 g
Mounting type	with accessories
Pneumatic connection, port 1	G1/2
Pneumatic connection, port 2	G1/2



FRC-M3-G1/2-KB00

Service unit combination

Feature	Data/description
Pneumatic connection, port 3	G1/2
Materials note	Contains PWIS substances
Materials information, housing	Zinc die-casting Wrought Aluminium alloy
Materials information for bowl	PC