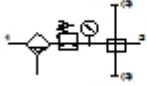


LFR-M2-G1/4-KA01

Service unit combination

| Feature | Data/description |
|------------------------------|--|
| Size | 2 |
| Series | M |
| Actuator lock | Rotary knob with lock |
| Assembly position | Vertical +/- 5° |
| Grade of filtration | 40 µm |
| Condensate drain | fully automatic |
| Design structure | Branching module Filter regulator with pressure gauge |
| Max. condensate volume | 52,75 cm ³ |
| Bowl guard | Plastic guard |
| Pressure gauge | with pressure gauge |
| Pressure control range | 0 - 10 bar |
| Inlet pressure 1 | 0 - 12 bar |
| Max. pressure hysteresis | 0,5 bar |
| Standard nominal flow rate | 1.750 l/min |
| Operating medium | Compressed air |
| Medium temperature | -10 - 60 °C |
| Ambient temperature | -10 - 60 °C |
| Product weight | 500 g |
| Mounting type | with accessories |
| Pneumatic connection, port 1 | G1/4 |
| Pneumatic connection, port 2 | G1/4 |
| Pneumatic connection, port 3 | G3/8 |



LFR-M2-G1/4-KA01

Service unit combination

| Feature | Data/description |
|--------------------------------|---|
| Pneumatic connection, port 4 | G1/4 |
| Materials note | Contains PWIS substances |
| Materials information, housing | Zinc die-casting Wrought Aluminium alloy |
| Materials information for bowl | PC |