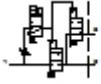




HEM-M3-G1/2-10230

Pressure build-up valve

Feature	Data/description
Exhaust-air function	throttleable
Type of actuation	electrical
Sealing principle	soft
Assembly position	Vertical +/- 5°
Manual override	resetting
Design structure	Poppet seat
Type of reset	mechanical spring
Type of piloting	Piloted
Flow direction	non reversible
Valve function	3/2 monostable closed
Operating pressure	2 - 10 bar
b value	0,3
C value	15 l/sbar
Standard nominal flow rate	3.800 l/min
Characteristic coil data	230V AC: 50Hz, AL7,5W,HL5W 230V AC: 60Hz, AL5W,HL3,7W
Corrosion resistance classification CRC	2
Medium temperature	-10 - 60 °C
Protection class	IP65
Ambient temperature	-10 - 50 °C
Product weight	1.471 g
Electrical connection	Plug to DIN 43650 Cubic design



Data sheet

Part no.: **183053**

Page:2

HEM-M3-G1/2-10230**Pressure build-up valve**

Feature	Data/description
	Design A
Mounting type	Line installation
Pneumatic connection, port 1	G1/2
Pneumatic connection, port 2	G1/2
Pneumatic connection, port 3	G3/8
Materials note	Contains PWIS substances
Materials information for seals	NBR
Materials information, housing	Aluminium