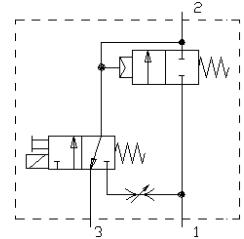
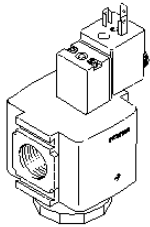


Start-up HEL-M2-G1/4-10230

Part number: 183023

FESTO



Datasheet

Feature	Value
Switching function symbol	2/2-way valve, normally closed
Switching function short code	2/2
Direction of flow reversible	No
Operating principle	Poppet valve
Form function component	Poppet valve
Type of pilot control	Indirect
Type of setting	Monostable
Type of reset	Mechanical spring
Type of mounting	Screw
Fitting position, any	No
Operating pressure min.	0 bar
Operating pressure max.	10 bar
Connection type main connections	Thread
Thread type (main ports)	G
Thread diameter (inch)	1/4 inch
Standard plug pattern	DI50:A
Actuation/reset	Single solenoid with spring return
Manual override	Rotary/detenting
Operating status display	No
Material of housing	Aluminium
Material of seals	NBR-Elastomer
Silicone status	Free
Product weight	0,564 kg
Switching time OFF/OVER (dom.)	7,7 ms
Switching time OFF/OVER	12 ms
Solenoid system (dimensioning)	N1
Type of voltage	AC/..
Nominal AC voltage	230/230
Nominal pick-up power rating (AC)	7.5/5.0
Nominal holding power rating (AC)	5.0/3.7
Frequency (AC)	50/60

Feature	Value
Duty cycle solenoid	100 %
Medium of operation	Filtered compressed air (40 µm)
Degree of protection as per IEC 529 IP	..65