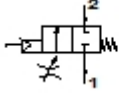


## HEL-M2-G1/4-16000

### Pressure build-up valve

Feature	Data/description
Exhaust-air function	throttleable
Type of actuation	pneumatic
Sealing principle	soft
Assembly position	Vertical +/- 5°
Manual override	resetting
Design structure	Poppet seat
Type of reset	mechanical spring
Type of piloting	direct
Flow direction	non reversible
Valve function	2/2 monostable closed
Operating pressure	2 - 16 bar
b value	0,7
C value	7 l/sbar
Standard nominal flow rate	2.400 l/min
Corrosion resistance classification CRC	2
Medium temperature	-10 - 50 °C
Ambient temperature	-10 - 65 °C
Product weight	411 g
Mounting type	Line installation
Pneumatic connection, port 1	G1/4
Pneumatic connection, port 2	G1/4
Pneumatic connection, port 3	G1/4



Data sheet

Part no.: **183015**

Page:2

## HEL-M2-G1/4-16000

### Pressure build-up valve

Feature	Data/description
Materials note	Contains PWIS substances
Materials information for seals	NBR
Materials information, housing	Aluminium