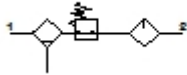


FRC-M1-G1/4-E10R

Service unit

Feature	Data/description
Size	1
Series	M
Actuator lock	Rotary knob with lock
Assembly position	Vertical +/- 5°
Grade of filtration	40 µm
Condensate drain	manual rotary
Design structure	Filter regulator without pressure gauge Proportional standard oil-mist lubricator
Max. condensate volume	10 cm ³
Bowl guard	Plastic guard
Pressure gauge	G1/8" prepared
Pressure control range	0 - 10 bar
Inlet pressure 1	<= 8 bar
Max. pressure hysteresis	0,4 bar
Standard nominal flow rate	440 l/min
Operating medium	Compressed air
Medium temperature	-10 - 60 °C
Ambient temperature	-10 - 60 °C
Product weight	558 g
Mounting type	Line installation with accessories
Pneumatic connection, port 1	G1/4
Pneumatic connection, port 2	G1/4
Materials note	Contains PWIS substances



FRC-M1-G1/4-E10R

Service unit

Feature	Data/description
Materials information, housing	Zinc die-casting
Materials information for bowl	PA