

solenoid valve

CPV14-M1H-30LS-3GLS-1/8

FESTO

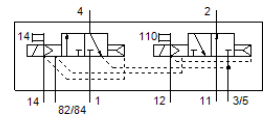
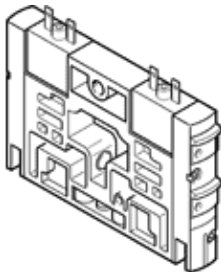
Part number: 176067

Classic - do not use for new projects

For valve terminal CPV. The valve housing contains two 3/2-way valves, one of which is normally open, the other is normally closed.

This type is suitable for vacuum.

Modern alternatives can be found by entering the first four characters of the type code in the search field.



Data sheet

| Feature | Value |
|---|--|
| Valve function | 2x3/2 open/closed, monostable |
| Type of actuation | electrical |
| Valve size | 14 mm |
| Standard nominal flow rate | 800 l/min |
| Operating pressure MPa | -0.09 ... 1 MPa |
| Operating pressure | -0.9 ... 10 bar |
| Design structure | Piston slide |
| Type of reset | Air spring |
| Protection class | IP65 |
| Nominal size | 6 mm |
| Exhaust-air function | not throttleable |
| Sealing principle | soft |
| Assembly position | Any |
| Manual override | detenting Pushing |
| Type of piloting | Piloted |
| Pilot air supply | external Internal |
| Flow direction | non reversible |
| Overlap | Positive overlap |
| Pilot pressure MPa | 0.3 ... 0.8 MPa |
| Pilot pressure | 3 ... 8 bar |
| b value | 0.42 |
| C value | 3.2 l/sbar |
| Switching time off | 30 ms |
| Switching time on | 24 ms |
| Duty cycle | 100% with holding current reduction |
| Electrical power consumption | 0.65 W |
| Max. positive test pulse with logic 0 | 1,400 µs |
| Max. negative test pulse with logic 1 | 400 µs |
| Operating medium | Compressed air in accordance with ISO8573-1:2010 [7:4:4] |
| Note on operating and pilot medium | Lubricated operation possible (subsequently required for further operation) |
| Vibration resistance | Transport application test at severity level 2 in accordance with FN 942017-4 and EN 60068-2-6 |
| Shock resistance | Shock test with severity level 2 in accordance with FN 942017-5 and EN 60068-2-27 |
| Corrosion resistance classification CRC | 2 - Moderate corrosion stress |
| PWIS conformity | VDMA24364-B1/B2-L |
| Storage temperature | -20 ... 40 °C |

| Feature | Value |
|--------------------------------|--|
| Medium temperature | -5 ... 50 °C |
| Ambient temperature | -5 ... 50 °C |
| Product weight | 120 g |
| Mounting type | with through hole |
| Auxiliary pilot air port 12/14 | Common line |
| Pilot exhaust port 82/84 | Common line |
| Pneumatic connection, port 1 | Common line |
| Pneumatic connection, 11 | Common line |
| Pneumatic connection, port 2 | G1/8 |
| Pneumatic ports 3/5 combined | Common line |
| Pneumatic connection, port 4 | G1/8 |
| Materials note | Conforms to RoHS |
| Material seals | HNBR NBR |
| Material housing | Aluminium die cast Brass POM PPS Steel |