

on-off valve

HEL-1/4-D-MINI-NPT

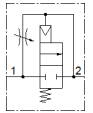
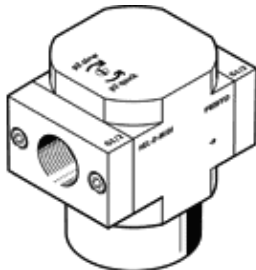
Part number: 173917

Classic - do not use for new projects

FESTO

Used in conjunction with service units for gradual pressure build-up.
The valve function is equivalent to a 2/2-way valve.

Modern alternatives can be found by entering the first four characters of the type code in the search field.



Data sheet

Feature	Value
Grid dimension	40 mm
Exhaust-air function	throttleable
Type of actuation	pneumatic
Sealing principle	soft
Assembly position	Any
Manual override	None
Design structure	Piston slide
Type of reset	mechanical spring
Type of piloting	direct
Flow direction	non reversible
Valve function	2/2 closed, monostable
Operating pressure	3 ... 16 bar
b value	0.41
C value	7.1 l/sbar
Standard nominal flow rate	1,500 l/min
Operating medium	Compressed air in accordance with ISO8573-1:2010 [7:4:4] Inert gases
Note on operating and pilot medium	Lubricated operation possible (subsequently required for further operation)
Corrosion resistance classification CRC	2 - Moderate corrosion stress
PWIS conformity	VDMA24364-B1/B2-L
Air purity class at output	Compressed air in accordance with ISO8573-1:2010 [7:4:4] Inert gases
Medium temperature	-10 ... 60 °C
Ambient temperature	-10 ... 60 °C
Product weight	126 g
Mounting type	Line installation with accessories
Pneumatic connection, port 1	1/4 NPT
Pneumatic connection, port 2	1/4 NPT
Materials note	Conforms to RoHS
Material seals	NBR
Material housing	Aluminium die cast