

# pressure regulator LR-1/2-D-7-MIDI-NPT

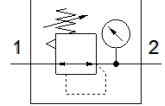
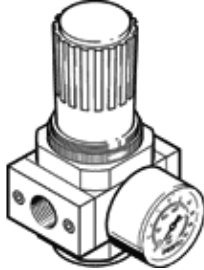
Part number: 173662

Classic - do not use for new projects

With pressure gauge, working pressure up to 7 bar.

Modern alternatives can be found by entering the first four characters of the type code in the search field.

FESTO



## Data sheet

Feature	Value
Size	Midi
Series	D
Assembly position	Any
Controller function	Output pressure constant
Operating pressure	16 bar
Max. pressure hysteresis	0.2 bar
Standard nominal flow rate	4,000 l/min
Operating medium	Compressed air in accordance with ISO8573-1:2010 [7:4:4] Inert gases
Note on operating and pilot medium	Lubricated operation possible (subsequently required for further operation)
Corrosion resistance classification CRC	2 - Moderate corrosion stress
PWIS conformity	VDMA24364-B1/B2-L
Air purity class at output	Compressed air in accordance with ISO8573-1:2010 [7:4:4] Inert gases
Medium temperature	-10 ... 60 °C
Ambient temperature	-10 ... 60 °C
Product weight	720 g
Mounting type	Front panel installation Line installation With mounting bracket Optional
Pneumatic connection, port 1	1/2 NPT
Pneumatic connection, port 2	1/2 NPT
Materials note	Conforms to RoHS
Material seals	NBR
Material housing	Zinc die-casting