

# Solenoid valve

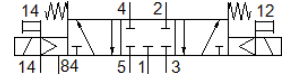
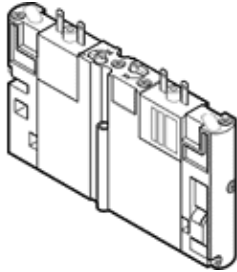
## CPA10-M1H-5/3-GS

Part number: 173454  
Product to be discontinued

FESTO

This type is suitable for vacuum.

Type to be discontinued. Available until 2017. See Support Portal for alternative products.



## Data sheet

| Feature                                 | Value                                                                       |
|-----------------------------------------|-----------------------------------------------------------------------------|
| Valve function                          | 5/3 closed                                                                  |
| Type of actuation                       | electrical                                                                  |
| Width                                   | 10 mm                                                                       |
| Standard nominal flow rate              | 330 l/min                                                                   |
| Operating pressure                      | -0.9 ... 10 bar                                                             |
| Design structure                        | Piston slide                                                                |
| Type of reset                           | Air spring                                                                  |
| Nominal size                            | 3.6 mm                                                                      |
| Exhaust-air function                    | not throttleable                                                            |
| Sealing principle                       | soft                                                                        |
| Assembly position                       | Any                                                                         |
| Manual override                         | with accessories, detenting                                                 |
| Type of piloting                        | Piloted                                                                     |
| Flow direction                          | non reversible                                                              |
| Pilot pressure                          | 3 ... 8 bar                                                                 |
| b value                                 | 0.33                                                                        |
| C value                                 | 1.39 l/sbar                                                                 |
| Switching time off                      | 17 ms                                                                       |
| Switching time on                       | 13 ms                                                                       |
| Operating medium                        | Compressed air in accordance with ISO8573-1:2010 [7:4:4]                    |
| Note on operating and pilot medium      | Lubricated operation possible (subsequently required for further operation) |
| Corrosion resistance classification CRC | 2                                                                           |
| Medium temperature                      | -5 ... 50 °C                                                                |
| Ambient temperature                     | -5 ... 50 °C                                                                |
| Mounting type                           | with through hole                                                           |
| Pneumatic connection, port 1            | Sub-base                                                                    |
| Pneumatic connection, port 2            | Sub-base                                                                    |
| Pneumatic connection, port 3            | Sub-base                                                                    |
| Pneumatic connection, port 4            | Sub-base                                                                    |
| Pneumatic connection, port 5            | Sub-base                                                                    |
| Materials information for seals         | NBR                                                                         |
| Materials information, housing          | Aluminium die cast                                                          |