

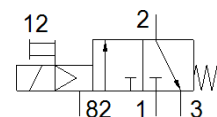
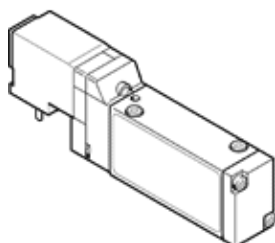
solenoid valve

MEH-3/2-5,0-I-B

Part number: 173416
Product to be discontinued

FESTO

Midi Pneumatic, with solenoid coil and manual override, without socket.
Type to be discontinued. Available until 2023. See Support Portal for alternative products.



Data sheet

| Feature | Value |
|---|--|
| Valve function | 3/2 closed, monostable |
| Type of actuation | electrical |
| Width | 17.8 mm |
| Standard nominal flow rate | 700 l/min |
| Operating pressure | 3 ... 8 bar |
| Design structure | Piston slide |
| Type of reset | mechanical spring |
| Authorisation | c UL us - Recognized (OL) |
| Protection class | IP65 |
| Nominal size | 5 mm |
| Grid dimension | 18 mm |
| Exhaust-air function | throttleable |
| Sealing principle | soft |
| Assembly position | Any |
| Manual override | with accessories, detenting |
| Type of piloting | Piloted |
| Pilot air supply | Internal |
| Flow direction | non reversible |
| Overlap | Positive overlap |
| b value | 0.38 |
| C value | 2.75 l/sbar |
| Switching time off | 50 ms |
| Switching time on | 20 ms |
| Duty cycle | 100 % |
| Characteristic coil data | 24 V DC: 1.5 W |
| Operating medium | Compressed air in accordance with ISO8573-1:2010 [7:4:4] |
| Note on operating and pilot medium | Lubricated operation possible (subsequently required for further operation) |
| Vibration resistance | Transport application test at severity level 1 in accordance with FN 942017-4 and EN 60068-2-6 |
| Shock resistance | Shock test with severity level 2 in accordance with FN 942017-5 and EN 60068-2-27 |
| Corrosion resistance classification CRC | 2 - Moderate corrosion stress |
| Storage temperature | -20 ... 40 °C |
| Medium temperature | -5 ... 50 °C |
| Sound pressure level | 75 dB(A) |
| Pilot medium | Compressed air in accordance with ISO8573-1:2010 [7:4:4] |
| Ambient temperature | -5 ... 50 °C |
| Product weight | 105 g |
| Electrical connection | Connection pattern type C to industry standard, 9.4 mm Plug Cubic design |

| Feature | Value |
|------------------------------|--------------------|
| Mounting type | On sub-base |
| Pilot exhaust port 82/84 | Sub-base |
| Pilot air port 12 | Sub-base |
| Pilot air port 14 | Sub-base |
| Pneumatic connection, port 1 | Sub-base |
| Pneumatic connection, port 2 | Sub-base |
| Pneumatic connection, port 3 | Sub-base |
| Materials note | Conforms to RoHS |
| Material seals | HNBR NBR |
| Material housing | Aluminium die cast |