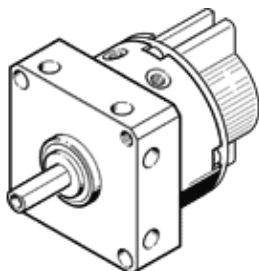


semi-rotary drive DSM-6-90-P-A

Part number: 173195

FESTO

with spigot shaft, fixed stop and position sensing



Data sheet

| Feature | Value |
|--|---|
| Size | 6 |
| Cushioning angle | 0.5 deg |
| Swivel angle | 0 ... 90 deg |
| Cushioning | P: Flexible cushioning rings/plates at both ends |
| Assembly position | Any |
| Mode of operation | double-acting |
| Design structure | Rotary vane |
| Position detection | For proximity sensor |
| Operating pressure | 3.5 ... 8 bar |
| Max. swivel frequency at 0.6 MPa (6 bar, 87 psi) | 3 Hz |
| Operating medium | Compressed air in accordance with ISO8573-1:2010 [7:4:4] |
| Note on operating and pilot medium | Lubricated operation possible (subsequently required for further operation) |
| PWIS conformity | VDMA24364-B1/B2-L |
| Ambient temperature | 0 ... 60 °C |
| Theoretical torque at 0.6 MPa (6 bar, 87 psi) | 0.15 Nm |
| Permissible mass moment of inertia | 0.00065 kgm ² |
| Product weight | 50 g |
| Mounting type | with internal (female) thread |
| Pneumatic connection | M3 |
| Materials note | Conforms to RoHS |
| Material of drive shaft | High alloy steel, non-corrosive |
| Material seals | TPE-U(PU) |
| Material housing | Aluminium Anodised |