

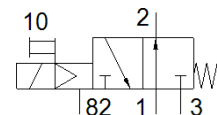
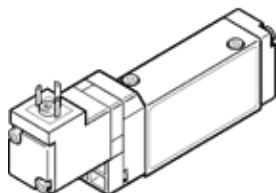
solenoid valve

MOEBH-3/2-5,0-B

Part number: 173002
Product to be discontinued

FESTO

With solenoid coil and manual override, without plug socket.
Type to be discontinued. Available until 2023. See Support Portal for alternative products.



Data sheet

| Feature | Value |
|---|--|
| Valve function | 3/2 open, monostable |
| Type of actuation | electrical |
| Width | 17.8 mm |
| Standard nominal flow rate | 600 l/min |
| Operating pressure | 2 ... 8 bar |
| Design structure | Piston slide |
| Type of reset | mechanical spring |
| Authorisation | c UL us - Recognized (OL) |
| Protection class | IP65 |
| Nominal size | 5 mm |
| Grid dimension | 18 mm |
| Exhaust-air function | throttleable |
| Sealing principle | soft |
| Assembly position | Any |
| Manual override | with accessories, detenting |
| Type of piloting | Piloted |
| Pilot air supply | Internal |
| Flow direction | non reversible |
| Overlap | Positive overlap |
| b value | 0.38 |
| C value | 2.75 l/sbar |
| Switching time off | 28 ms |
| Switching time on | 10 ms |
| Duty cycle | 100 % |
| Characteristic coil data | 24 V DC: 2.5 W |
| Operating medium | Compressed air in accordance with ISO8573-1:2010 [7:4:4] |
| Note on operating and pilot medium | Lubricated operation possible (subsequently required for further operation) |
| Vibration resistance | Transport application test at severity level 1 in accordance with FN 942017-4 and EN 60068-2-6 |
| Shock resistance | Shock test with severity level 2 in accordance with FN 942017-5 and EN 60068-2-27 |
| Corrosion resistance classification CRC | 2 - Moderate corrosion stress |
| Storage temperature | -20 ... 40 °C |
| Medium temperature | -5 ... 50 °C |
| Sound pressure level | 75 dB(A) |
| Pilot medium | Compressed air in accordance with ISO8573-1:2010 [7:4:4] |
| Ambient temperature | -5 ... 50 °C |
| Product weight | 105 g |
| Electrical connection | Plug pattern type C to EN 175301-803 Plug to EN 175301-803 |

| Feature | Value |
|------------------------------|--------------------|
| | Cubic design |
| Mounting type | On sub-base |
| Pilot exhaust port 82/84 | Sub-base |
| Pilot air port 12 | Sub-base |
| Pilot air port 14 | Sub-base |
| Pneumatic connection, port 1 | Sub-base |
| Pneumatic connection, port 2 | Sub-base |
| Pneumatic connection, port 3 | Sub-base |
| Materials note | Conforms to RoHS |
| Material seals | HNBR NBR |
| Material housing | Aluminium die cast |