

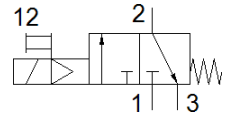
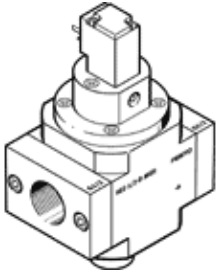
on-off valve HEE-3/4-D-MIDI-24

Part number: 172947
Classic - do not use for new projects

FESTO

Used in conjunction with service units.

Modern alternatives can be found by entering the first four characters of the type code in the search field.



Data sheet

Feature	Value
Design structure	Piston slide
Type of actuation	electrical
Sealing principle	soft
Exhaust-air function	not throttleable
Manual override	detenting
Type of reset	mechanical spring
Type of piloting	Piloted
Valve function	3/2 closed, monostable
Operating pressure	2.5 ... 16 bar
C value	17.3 l/sbar
b value	0.41
Standard nominal flow rate	3,800 l/min
Duty cycle	100 %
Characteristic coil data	24 V DC: 3 W
Permissible voltage fluctuation	+/- 10 %
Operating medium	Compressed air in accordance with ISO8573-1:2010 [7:4:4] Inert gases
Note on operating and pilot medium	Lubricated operation possible (subsequently required for further operation)
Corrosion resistance classification CRC	2 - Moderate corrosion stress
Materials note	Conforms to RoHS
PWIS conformity	VDMA24364-B1/B2-L
Medium temperature	-10 ... 60 °C
Ambient temperature	-10 ... 60 °C
Mounting type	Line installation with accessories
Assembly position	Any
Flow direction	non reversible
Product weight	500 g
Pneumatic connection, port 1	G3/4
Pneumatic connection, port 2	G3/4
Pneumatic connection, port 3	G1/4
Air purity class at output	Compressed air in accordance with ISO8573-1:2010 [7:4:4] Inert gases
Electrical connection	Plug pattern type C to EN 175301-803 Plug Per DIN EN 175301-803
Signal status display	with accessories
Material seals	NBR
Material housing	Aluminium die cast