

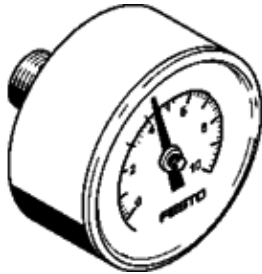
# Pressure gauge MA-40-10-1/8-EN-CT

Part number: 165865

FESTO

With display unit in bar and psi.

Products to be discontinued. Available until 2010.



## Data sheet

Feature	Value
Indicating range [bar]	0 ... 10 bar
Conforms to standard	EN 837-1
Nominal size of pressure gauge	40
Design structure	Bourdon-tube pressure gauge
Mounting type	Line installation
Operating medium	Neutral liquids Neutral gases No oxygen No acetyls
Operating pressure	0 ... 10 bar
Alternating load factor	0.66
Measurement accuracy class	2,5
Protection class	IP43
Medium temperature	-20 ... 60 °C
Ambient temperature	-20 ... 60 °C
Materials note	Free of copper and PTFE Conforms to RoHS
Position of connection	Rear side central
Pneumatic connection	G1/8
Materials in contact with media	Brass
Materials information for screw-in stud	Nickel plated Brass
Materials information, housing	ABS
Materials info, viewing window	PS
Housing colour	Black
Product weight	60 g