

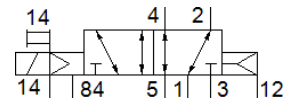
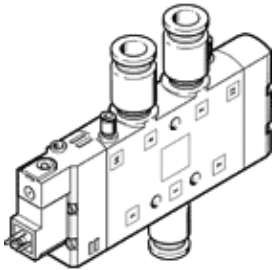
solenoid valve

CPE24-M2H-5LS-QS-10

Part number: 163822

FESTO

High component density
This type is suitable for vacuum.



Data sheet

| Feature | Value |
|--|--|
| Valve function | 5/2 monostable |
| Type of actuation | electrical |
| Width | 24 mm |
| Standard nominal flow rate | 1,250 l/min |
| Operating pressure MPa | -0.09 ... 1 MPa |
| Operating pressure | -0.9 ... 10 bar |
| Design structure | Piston slide |
| Type of reset | Air spring |
| Authorisation | c UL us - Recognized (OL) |
| Maritime classification | see certificate |
| CE mark (see declaration of conformity) | to EU directive low-voltage devices |
| UKCA marking (see declaration of conformity) | To UK instructions for electrical equipment |
| Protection class | IP65 with plug socket to IEC 60529 |
| Nominal size | 11 mm |
| Exhaust-air function | throttleable |
| Sealing principle | soft |
| Assembly position | Any |
| Manual override | with accessories, detenting Pushing |
| Type of piloting | Piloted |
| Pilot air supply | external |
| Flow direction | reversible |
| Valve position identification | Inscription label holder |
| Overlap | Positive overlap |
| Pilot pressure MPa | 0.25 ... 1 MPa |
| Pilot pressure | 2.5 ... 10 bar |
| Switching time off | 50 ms |
| Switching time on | 40 ms |
| Duty cycle | 100 % |
| Max. positive test pulse with logic 0 | 3,300 µs |
| Max. negative test pulse with logic 1 | 3,100 µs |
| Characteristic coil data | 110 V AC: 50/60 Hz, pick-up power 3 VA, holding power 2.4 VA |
| Permissible voltage fluctuation | -15 % / +10 % |
| Operating medium | Compressed air in accordance with ISO8573-1:2010 [7:4:4] |
| Note on operating and pilot medium | Lubricated operation possible (subsequently required for further operation) |
| Vibration resistance | Transport application test at severity level 2 in accordance with FN 942017-4 and EN 60068-2-6 |
| Shock resistance | Shock test with severity level 2 in accordance with FN 942017-5 and EN 60068-2-27 |
| Corrosion resistance classification CRC | 2 - Moderate corrosion stress |

| Feature | Value |
|------------------------------|--|
| PWIS conformity | VDMA24364-B1/B2-L |
| Medium temperature | -5 ... 50 °C |
| Pilot medium | Compressed air in accordance with ISO8573-1:2010 [7:4:4] |
| Ambient temperature | -5 ... 50 °C |
| Electrical connection | Plug pattern type C to EN 175301-803 |
| Mounting type | with through hole |
| Pilot exhaust port 82 | M5 |
| Pilot exhaust port 84 | M5 |
| Pilot air port 12 | M5 |
| Pilot air port 14 | M5 |
| Pneumatic connection, port 1 | QS-10 |
| Pneumatic connection, port 2 | QS-10 |
| Pneumatic connection, port 3 | G3/8 |
| Pneumatic connection, port 4 | QS-10 |
| Pneumatic connection, port 5 | G3/8 |
| Materials note | Conforms to RoHS |
| Material seals | NBR |
| Material housing | Aluminium die cast |