

# solenoid valve

## CPE24-M2H-3GLS-3/8

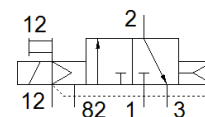
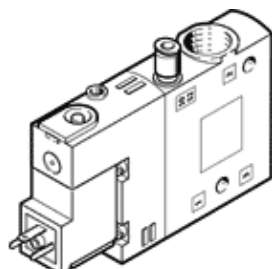
Part number: 163813  
Classic - do not use for new projects

FESTO

High component density

This type is suitable for vacuum.

Modern alternatives can be found by entering the first four characters of the type code in the search field.



## Data sheet

| Feature                                      | Value  |
|--|--|
| Valve function                               | 3/2 closed, monostable   |
| Type of actuation                            | electrical   |
| Width  | 24 mm  |
| Standard nominal flow rate                   | 2,500 l/min  |
| Operating pressure MPa                       | -0.09 ... 1 MPa  |
| Operating pressure                           | -0.9 ... 10 bar  |
| Design structure                             | Piston slide   |
| Type of reset                                | Air spring   |
| Authorisation                                | c UL us - Recognized (OL)  |
| Maritime classification                      | see certificate  |
| CE mark (see declaration of conformity)      | to EU directive low-voltage devices  |
| UKCA marking (see declaration of conformity) | To UK instructions for electrical equipment  |
| Protection class                             | IP65<br>with plug socket<br>to IEC 60529   |
| Nominal size                                 | 11 mm  |
| Sealing principle                            | soft   |
| Assembly position                            | Any  |
| Manual override                              | with accessories, detenting<br>Pushing   |
| Type of piloting                             | Piloted  |
| Pilot air supply                             | external   |
| Flow direction                               | non reversible   |
| Valve position identification                | Inscription label holder   |
| Overlap                                      | Positive overlap   |
| Pilot pressure MPa                           | 0.25 ... 1 MPa   |
| Pilot pressure                               | 2.5 ... 10 bar   |
| Switching time off                           | 33 ms  |
| Switching time on                            | 50 ms  |
| Duty cycle                                   | 100 %  |
| Max. positive test pulse with logic 0        | 3,300 µs   |
| Max. negative test pulse with logic 1        | 3,100 µs   |
| Characteristic coil data                     | 110 V AC: 50/60 Hz, pick-up power 3 VA, holding power 2.4 VA                                   |
| Permissible voltage fluctuation              | -15 % / +10 %  |
| Operating medium                             | Compressed air in accordance with ISO8573-1:2010 [7:4:4]                                       |
| Note on operating and pilot medium           | Lubricated operation possible (subsequently required for further operation)                    |
| Vibration resistance                         | Transport application test at severity level 2 in accordance with FN 942017-4 and EN 60068-2-6 |
| Shock resistance                             | Shock test with severity level 2 in accordance with FN 942017-5 and EN 60068-2-27              |

| Feature                                 | Value  |
|---|--|
| Corrosion resistance classification CRC | 2 - Moderate corrosion stress                            |
| PWIS conformity                         | VDMA24364-B1/B2-L  |
| Medium temperature                      | -5 ... 50 °C   |
| Pilot medium                            | Compressed air in accordance with ISO8573-1:2010 [7:4:4] |
| Ambient temperature                     | -5 ... 50 °C   |
| Product weight                          | 220 g  |
| Electrical connection                   | Plug pattern type C to EN 175301-803                     |
| Mounting type                           | with through hole  |
| Pilot exhaust port 82                   | M5   |
| Pilot air port 12                       | M5   |
| Pneumatic connection, port 1            | G3/8   |
| Pneumatic connection, port 2            | G3/8   |
| Pneumatic connection, port 3            | G3/8   |
| Materials note                          | Conforms to RoHS   |
| Material seals                          | NBR  |
| Material housing                        | Aluminium die cast                                       |