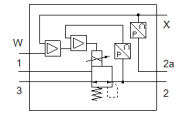
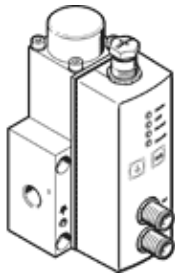


proportional pressure regulator VPPL-3Q-3-Z-2L40H-V1-A-S1-5

Part number: 1635982

FESTO



Data sheet

| Feature | Value |
|--|---|
| Nominal diameter, pressurisation | 3 mm |
| Nominal diameter, exhaust | 3 mm |
| Type of actuation | electrical |
| Sealing principle | soft |
| Assembly position | Any Preferably upright |
| Design structure | directly-controlled piston regulator |
| Short circuit strength | No |
| Max. line length | 30 m |
| Safety instructions | Safety setting VPPL |
| Polarity protected | for all electrical connections |
| Type of reset | mechanical spring |
| Type of piloting | direct |
| Valve function | 3-way closed proportional-pressure regulator |
| Type of display | LED display |
| Operating pressure MPa | ≤ 5 MPa |
| Operating pressure | ≤ 50 bar |
| Pressure regulation range MPa | 0.04 ... 4 MPa |
| Pressure regulation range | 2 ... 40 bar |
| Inlet pressure 1 | 0 ... 50 bar |
| Supply pressure 1 MPa | 0 ... 5 MPa |
| Max. pressure hysteresis (MPa) | 0.04 MPa |
| Max. pressure hysteresis | 0.4 bar 5.8 psi |
| b value | 0.25 |
| C value | 0.8 l/sbar |
| Standard nominal flow rate | 245 l/min |
| Standard nominal flow rate 2-3 | 282 l/min |
| Switching time off | 654 ms |
| Switching time on | 428 ms |
| Operating voltage range DC | 21.6 ... 27.6 V |
| Duty cycle | 100 % |
| Max. electrical power consumption | 26.7 W |
| Residual ripple | 10 % |
| Signal range, analogue output | 4 - 20 mA |
| Signal range, analogue input | 0 - 10 V |
| SETPOINT/ACTUAL values | Voltage type 0 - 10 V |
| Operating medium | Compressed air in accordance with ISO8573-1:2010 [7:4:4] Inert gases |
| Note on operating and pilot medium | Lubricated operation not possible |
| Authorisation | c UL us - Listed (OL) |
| KC mark | KC-EMV |
| CE mark (see declaration of conformity) | to EU directive for EMC |
| UKCA marking (see declaration of conformity) | To UK instructions for EMC |
| Corrosion resistance classification CRC | 2 - Moderate corrosion stress |
| PWIS conformity | VDMA24364 zone III |

| Feature | Value |
|---|----------------------------------|
| Medium temperature | 5 ... 50 °C |
| Protection class | IP65 |
| Ambient temperature | 5 ... 50 °C |
| Storage temperature | -10 ... 60 °C |
| Product weight | 1,100 g |
| Linearity error in ± %FS | 1 %FS |
| Overall accuracy | 1,25 %FS |
| Temperature coefficient | 0.04 %/K |
| Repetition accuracy in ± %FS | 1 %FS |
| Diagnosis interface electrical connection | Socket, M12, 5-pin, A-coded |
| Electrical connection IN | Plug, M12, 5-pin, A-coded |
| Electrical connection OUT | Plug, M12, 5-pin, A-coded |
| Mounting type | with through hole |
| Pneumatic connection, port 1 | Flange G1/4 |
| Pneumatic connection, port 2 | Flange |
| Pneumatic connection, port 3 | Flange |
| Materials note | Conforms to RoHS |
| Material housing | Anodised wrought aluminium alloy |