

# Swivel module

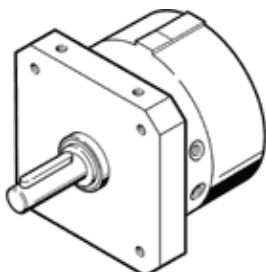
## DSM-40-270-P-CL

Part number: 163006

FESTO

With spigot shaft, shock absorber on left

These drives can be delivered on request with ATEX certification. The data on "ATEX identification", "ATEX ambient temperature" and "CE label" in the data sheet relate only to drives with certification.



### Data sheet

Feature	Value
Size	40
Cushioning angle	15 deg
Rotation angle adjustment range	0 ... 255 deg
Swivel angle	255 deg
Cushioning	CL: shock absorber left P: Flexible cushioning rings/plates at both ends
Assembly position	Any
Fine adjustment	-5 deg
Mode of operation	double-acting
Design structure	Rotary vane
Position detection	No
Operating pressure	1.5 ... 10 bar
Max. swivel frequency at 6 bar	0.7 Hz
ATEX identification	II 2 G c T4
ATEX ambient temperature	0°C ≤ Ta ≤ +60°C
Operating medium	Filtered compressed air
CE mark (see declaration of conformity)	to EU directive explosion protection (ATEX)
Ambient temperature	-10 ... 60 °C
Torque at 6 bar	20 Nm
Product weight	2,830 g
Mounting type	with internal (female) thread
Pneumatic connection	G1/8
Materials note	Free of copper and PTFE
Materials information for drive shaft	Steel Nickel plated
Materials information for seals	TPE-U(PU)
Materials information, housing	Wrought Aluminium alloy