

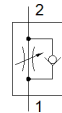
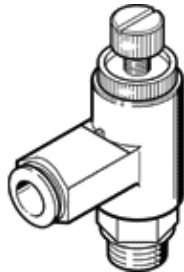
one-way flow control valve GRLA-1/4-QS-8-RS-B

Part number: 162968
Product to be discontinued

FESTO

With knurled screw and lock nut

Type to be discontinued. Available until 2023. See Support Portal for alternative products.



Data sheet

Feature	Value
Valve function	One-way flow control function for exhaust air
Pneumatic connection, port 1	QS-8
Pneumatic connection, port 2	G1/4
Type of actuation	manual
Adjusting element	Knurled screw
Mounting type	Threaded
Standard nominal flow rate in flow control direction	650 l/min
Standard nominal flow rate in non-return direction	600 ... 750 l/min
Ambient temperature	-10 ... 60 °C
Assembly position	Any
Operating pressure complete temperature range	0.2 ... 10 bar
Standard flow rate in flow control direction 0.6->0 MPa (6->0 bar, 87->0 psi)	1,130 l/min
Standard flow rate in non-return direction at 0.6->0 MPa (6->0 bar, 87->0 psi)	800 ... 1260 l/min
Operating medium	Compressed air in accordance with ISO8573-1:2010 [7:4:4]
Note on operating and pilot medium	Lubricated operation possible (subsequently required for further operation)
PWIS conformity	VDMA24364-B1/B2-L
Storage temperature	-10 ... 40 °C
Medium temperature	-10 ... 60 °C
Nominal tightening torque	11 Nm
Tolerance for nominal tightening torque	± 10 %
Permissible actuation moment, regulating screw	0.4 Nm
Product weight	30 g
Material of threaded plug	Wrought Aluminium alloy
Materials note	Conforms to RoHS
Material seals	NBR TPE-U(PU)
Material release ring	POM
Material knurled head	Wrought Aluminium alloy
Material adjusting screw	Brass
Material swivel fitting	PBT-reinforced