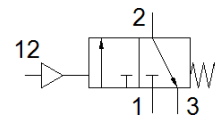
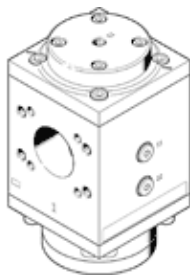


on-off valve PVEL-P-124-HP3

Part number: 1629205

FESTO



Data sheet

| Feature | Value |
|--|---|
| Series | L |
| Nominal diameter DN | 54 |
| Design structure | Piston slide |
| Type of actuation | pneumatic |
| Sealing principle | soft |
| Exhaust-air function | not throttleable |
| Type of reset | mechanical spring |
| Type of piloting | direct |
| Valve function | 3/2 closed, monostable |
| Operating pressure MPa | 0 ... 5 MPa |
| Operating pressure | 0 ... 50 bar |
| Pilot pressure | 9 ... 50 bar |
| Operating medium | Compressed air in accordance with ISO8573-1:2010 [7:4:4] Inert gases |
| Note on operating and pilot medium | Lubricated operation possible (subsequently required for further operation) |
| Corrosion resistance classification CRC | 2 - Moderate corrosion stress |
| Materials note | Conforms to RoHS |
| PWIS conformity | VDMA24364 zone III |
| Medium temperature | 5 ... 50 °C |
| Ambient temperature | 5 ... 50 °C |
| CE mark (see declaration of conformity) | to EU directive pressure devices |
| UKCA marking (see declaration of conformity) | UK regulation for pressure equipment |
| Food-safe | See Supplementary material information |
| Assembly position | Any |
| Product weight | 6,900 g |
| Pneumatic connection, port 3 | G1/2 |
| Pilot air port 12 | G1/4 |
| Pilot air supply | external |
| Material Piston slide | Wrought Aluminium alloy |
| Material seals | NBR PE |
| Material housing | Wrought Aluminium alloy |