

# Solenoid valve

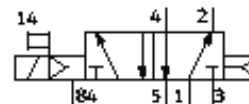
## MN2H-5/2-D-01-110AC

Part number: 161880

FESTO

In accordance with ISO 15407/-1, with solenoid coil and manual override, without plug socket.

Products to be discontinued. Available until 2009.



## Data sheet

| Feature                                 | Value   |
|---|---|
| Valve function                          | 5/2 single solenoid   |
| Type of actuation                       | electrical  |
| Width                                   | 26 mm   |
| Standard nominal flow rate              | 1,000 l/min   |
| Operating pressure                      | 2 ... 10 bar  |
| Design structure                        | Piston slide  |
| Type of reset                           | Air spring  |
| Protection class                        | IP65  |
| Authorisation                           | Germanischer Lloyd  |
| Nominal size                            | 8 mm  |
| Grid dimension                          | 27 mm   |
| Exhaust-air function                    | throttleable  |
| Sealing principle                       | soft  |
| Assembly position                       | Any   |
| Conforms to standard                    | ISO 15407-1<br>VDMA 24563   |
| Manual override                         | with accessories, detenting   |
| Type of piloting                        | Piloted   |
| Pilot air supply                        | Internal  |
| Flow direction                          | non reversible  |
| Switching time off                      | 43 ms   |
| Switching time on                       | 31 ms   |
| Characteristic coil data                | 110 V AC: 50 Hz, switching power: 2 VA  |
| Operating medium                        | filtered compressed air, grade of filtration 40 µm, lubricated or unlubricated      |
| Corrosion resistance classification CRC | 2   |
| Medium temperature                      | -10 ... 50 °C   |
| Ambient temperature                     | -10 ... 50 °C   |
| Product weight                          | 270 g   |
| Electrical connection                   | Plug<br>to DIN 43650<br>Design C  |
| Mounting type                           | with through hole   |
| Pilot exhaust port 82/84                | Connection plate size 26 mm, according to ISO 15407-1<br>Sub-base VDMA 24563 size 1 |
| Pneumatic connection, port 1            | Connection plate size 26 mm, according to ISO 15407-1<br>Sub-base VDMA 24563 size 1 |
| Pneumatic connection, port 2            | Connection plate size 26 mm, according to ISO 15407-1<br>Sub-base VDMA 24563 size 1 |
| Pneumatic connection, port 3            | Connection plate size 26 mm, according to ISO 15407-1<br>Sub-base VDMA 24563 size 1 |
| Pneumatic connection, port 4            | Connection plate size 26 mm, according to ISO 15407-1                               |

| <b>Feature</b>                  | <b>Value</b>  |
|---------------------------------|---|
|                                 | Sub-base VDMA 24563 size 1  |
| Pneumatic connection, port 5    | Connection plate size 26 mm, according to ISO 15407-1<br>Sub-base VDMA 24563 size 1 |
| Materials information for seals | NBR   |
| Materials information, housing  | Aluminium die cast  |